

# POLOS & GOLF SHIRTS

---



# CLASSIC HEAVY WEIGHT POLOS

MEN'S STYLE: **GMFP8**

LADIES' STYLE: **GLFP8**



FABRIC: Polycotton pique knit (240g)

ADULT SIZES: S - M - L - XL - 2XL - 3XL - 4XL - 5XL

## FEATURES:

- Knitted collar
- Double stitched hem and sleeves
- Produced from the best quality yarns for durability





The logo for 'TEE & COTTON' features a stylized red and black graphic element on the left, followed by the text 'TEE &' in a serif font and 'COTTON' in a larger serif font below it, with a registered trademark symbol (®) to the right.

# CLASSIC PIQUE KNIT POLOS

MEN'S STYLE: **PKD201**

LADIES' STYLE: **LPK2**

YOUTH STYLE: **KPK2**



FABRIC: Combed polycotton pique knit (175g)

ADULT SIZES: S - M - L - XL - 2XL - 3XL - 4XL - 5XL

YOUTH SIZES: 4/5yr - 5/6yr - 6/7yr - 7/8yr - 8/9yr - 9/10yr - 10/11yr - 11/12yr - 12/13yr

## FEATURES:

- Knitted collar using high quality yarns to maintain shape
- Superior quality pique knit fabric produced from the best yarns for durability
- Double stitched hem and sleeves
- Men's style has pockets on request
- Ladies' style has side slits for comfort



## COLOURS AVAILABLE IN ADULTS:



## COLOURS AVAILABLE IN YOUTH SIZES:



# LONG SLEEVE CLASSIC PIQUE KNIT POLO

STYLE: PKD3

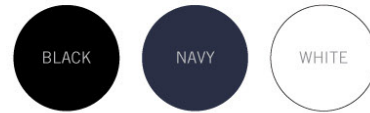


FABRIC: Combed polycotton pique knit (175g)

SIZES: S - M - L - XL - 2XL - 3XL

## FEATURES:

- Knitted collar using high quality yarns to maintain shape
- Superior quality pique knit fabric products from the best yarns for durability
- Double stitched hem and sleeves
- Classic fit
- Pockets on request



TEE &  
COTTON®



# GC STRATUS POLO

MEN'S STYLE: **GMFP9**

LADIES' STYLE: **GLFP9**



FABRIC: Combed polycotton pique knit (175g)

SIZES: S - M - L - XL - 2XL - 3XL - 4XL - 5XL

## FEATURES:

- Knitted collar
- Contrast placket, side panels and piping detail
- Produced from the best quality yarns for durability
- Ladies' style has side slits for ease of movement



BLACK/LIME



BLACK/RED



BLACK/ROYAL



**GC** GLOBAL  
CITIZEN



FABRIC: 100% Combed cotton (170g)

ADULT SIZES: S - M - L - XL - 2XL - 3XL - 4XL - 5XL

## DELTA GOLFER

MEN'S STYLE: **CGU6**



### FEATURES:

- Knitted collar and cuffs with refined contrast trim
- 100% Combed cotton produced from the best quality yarns for coolness
- Side slits for comfort
- Classic modern fit
- Pockets on request



## PENCIL STRIPE GOLFER

MEN'S STYLE: **CGU3**



### FEATURES:

- Knitted collar and cuffs with contrast trim
- 100% Combed cotton produced from the best quality yarns for coolness
- Side slits for comfort
- Classic fit
- Pockets on request



# FLAT PIPING POLO

MEN'S STYLE: **MFP5**

LADIES' STYLE: **LSB5**



**TEE &  
COTTON®**

FABRIC: 100% Combed cotton (170g)

SIZES: S - M - L - XL - 2XL - 3XL - 4XL - 5XL

## FEATURES:

100% Combed cotton produced from the best quality yarns for coolness and strength

- Contrast stitching and flat piping detail
- Side slits for comfort
- Men's style - classic fit and pockets on request
- Ladies' style has an elongated open placket for comfort and a tailored fit







## CLASSIC MICRODOT POLO

STYLE: **SIE8**

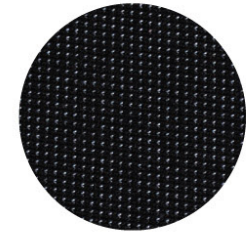


FABRIC: Cotton poly microdot (180g)

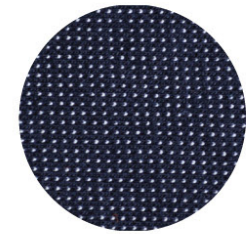
ADULT SIZES: S - M - L - XL - 2XL - 3XL - 4XL - 5XL

### FEATURES:

- Classic, colourfast surface interest fabric produced from top quality yarns
- Contrast collar tip and piping on sleeves
- Engraved matching buttons
- Pockets on request
- Classic fit



BLACK/WHITE



NAVY/WHITE

# LIFESTYLE SPORTS POLO

STYLE: **MSP2**



FABRIC: 100% Polyester Interlock - 155g

SIZES: XS - S - M - L - XL - 2XL - 3XL

**FEATURES:**

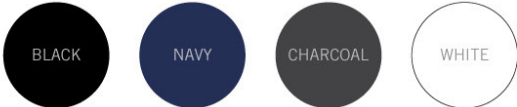
- Moisture wicking
- Modern sports fit
- Ideal for sporting activities and team building events
- High quality moisture management fabric creates a cool, dry zone next to the skin
- Removable label allows branding freedom



MOISTURE WICKING



WASH & WEAR





MOISTURE WICKING



WASH & WEAR

FABRIC: 100% Polyester moisture wicking pique knit

ADULT SIZES: S - M - L - XL - 2XL - 3XL - 4XL - 5XL

**FEATURES:**

- High quality fabric keeps you cool and dries quickly through evaporation and is crease resistant
- Creates a cool, dry zone next to the skin



## GC MATRIX POLO

MEN'S STYLE: **GMMX7**  
LADIES' STYLE: **GLMX7**

**FEATURES:**

- Contrasting placket and neck binding



ORANGE  
/GRAPHITE



## GC SYNERGY POLO

MEN'S STYLE: **GMMX8**  
LADIES' STYLE: **GLMX8**

**FEATURES:**

- Contrasting trim on collar, neck binding and sleeves



LIME  
/NAVY



RED  
/BLACK



## GC VECTOR POLO

MEN'S STYLE: **GMMX9**  
LADIES' STYLE: **GLMX9**

**FEATURES:**

- Contrasting inserts on shoulders and sides



CYAN  
/GRAPHITE

